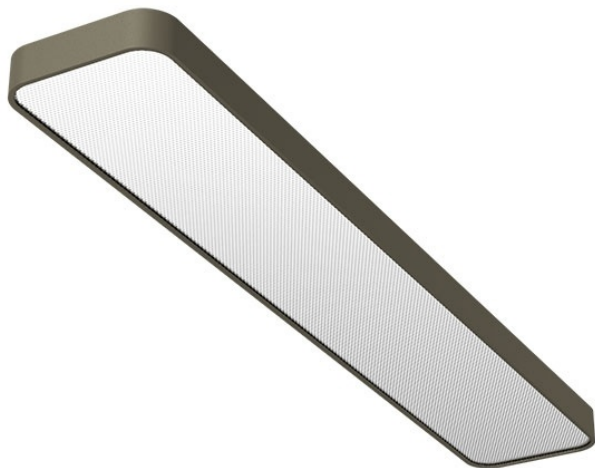


EDDGE R WALL T5

series: EDDGE R



Direct and indirect



IP 20

Mounting on wall

890 × 200 × 47 mm

Wall luminaires for fluorescent tubes
Body made of extruded aluminium profile
Diffuser made of satinic plexi for high-comfort soft light diffusion or microprismatic structure for glare reduction
Elox or powder coated finish
Electronic or dimmable electronic ballast
Accessories to be ordered separately

Product description

Product code

0-140765.31F

Optics

Microprismatic diffuser

Dimension a

890 mm

Dimension c

47 mm

Lamp caps

G5

Mounting type

mounting on wall,

Weight

3.4 kg

Driver

Analog 1-10V

Colour

moss grey

Dimension b

200 mm

Type of light source

T5

Total power consumption

78 W

Cover

IP 20

Photometry

