

EDDGE WALL T5 PETITE

series: EDDGE



Direct and indirect



IP 20

Mounting on wall

1190 × 80 × 85 mm

Wall luminaires for fluorescent tubes
Body made of extruded aluminium profile
Diffuser made of satinic plexi for high-comfort soft light diffusion or microprismatic structure for glare reduction
Brushed aluminium or powder coated finish
Electronic or dimmable electronic ballast
Accessories to be ordered separately

Product description

Product code

0-140876.31F

Optics

Microprismatic diffuser

Dimension a

1190 mm

Dimension c

85 mm

Lamp caps

G5

Mounting type

mounting on wall,

Weight

3.3 kg

Driver

Analog 1-10V

Colour

moss grey

Dimension b

80 mm

Type of light source

T5

Total power consumption

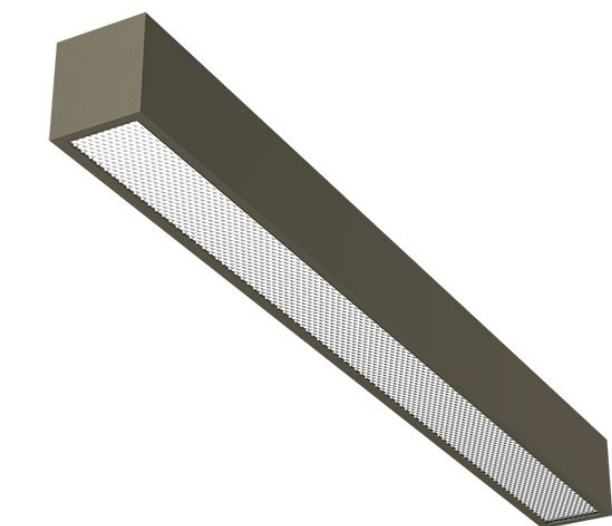
54 W

Cover

IP 20

Designed for

interior



Photometry

