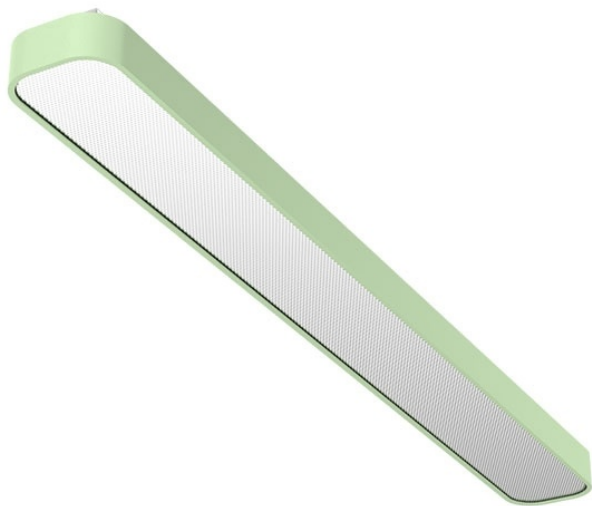


EDDGE R LED NARROW

series: EDDGE R



884 × 120 × 64 mm

LED fixture for suspension or surface mounting
Body made of extruded aluminium profile
Diffuser made of satinic plexi for high-comfort soft light diffusion or microprismatic structure for glare reduction
Powder coated finish
Electronic or dimmable electronic ballast
Accessories to be ordered separately

Product description

Product code
0-243028.21S

Optics
Microprismatic diffuser

Dimension a
884 mm

Dimension c
64 mm

Total power consumption
49 W

Luminous flux indirect
1597 lm

Color index (RA)
80

Cover
IP 20

Designed for
interior

Driver
DALI / SwitchDim

Colour
pastel green

Dimension b
120 mm

Type of light source
LED

Luminous flux
5271 lm

Color temperature
4000 K

Mounting type
surface mounted, suspended

Weight
3 kg

Photometry

