

EDDGE R LED NARROW

series: EDDGE R



Led lights

Direct and indirect

IP 20

Surface mounted

1165 × 120 × 64 mm

LED fixture for suspension or surface mounting

Body made of extruded aluminium profile

Diffuser made of satinic plexi for high-comfort soft light diffusion or microprismatic structure for glare reduction

Powder coated finish

Electronic or dimmable electronic ballast

Accessories to be ordered separately

Product description

Product code
0-243030.21E

Optics
Microprismatic diffuser

Dimension a
1165 mm

Dimension c
64 mm

Total power consumption
52 W

Luminous flux indirect
1389 lm

Color index (RA)
80

Cover
IP 20

Designed for
interior

Driver
DALI / SwitchDim

Colour
blue grey

Dimension b
120 mm

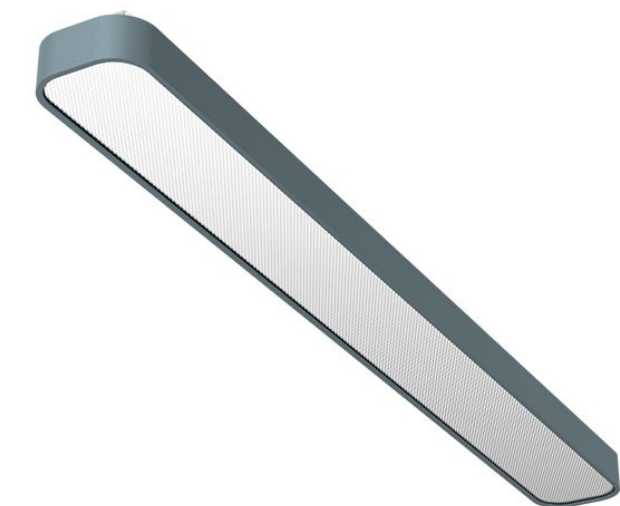
Type of light source
LED

Luminous flux
6112 lm

Color temperature
4000 K

Mounting type
surface mounted, suspended

Weight
3.8 kg



Photometry

