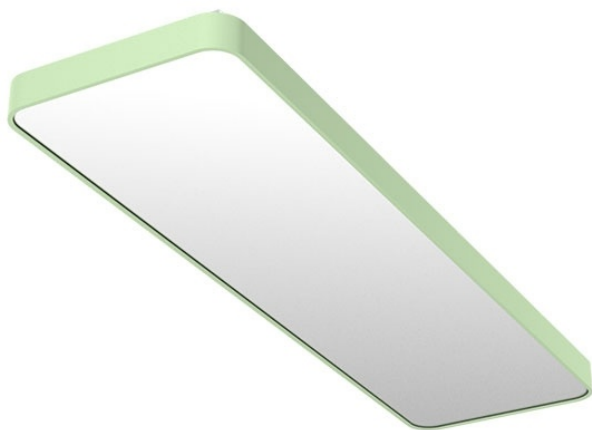


EDDGE R LED WIDE

series: EDDGE R



854 × 315 × 64 mm

LED fixture for suspension or surface mounting
Body made of extruded aluminium profile
Diffuser made of satinic plexi for high-comfort soft light diffusion or microprismatic structure for glare reduction
Powder coated finish
Electronic or dimmable electronic ballast
Accessories to be ordered separately

Product description

Product code
0-243091.01S

Optics
Microprismatic diffuser

Dimension a
854 mm

Dimension c
64 mm

Total power consumption
49 W

Luminous flux indirect
1597 lm

Color index (RA)
80

Cover
IP 20

Designed for
interior

Driver
EVG

Colour
pastel green

Dimension b
315 mm

Type of light source
LED

Luminous flux
5265 lm

Color temperature
4000 K

Mounting type
surface mounted, suspended

Weight
5.7 kg

Photometry

