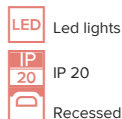
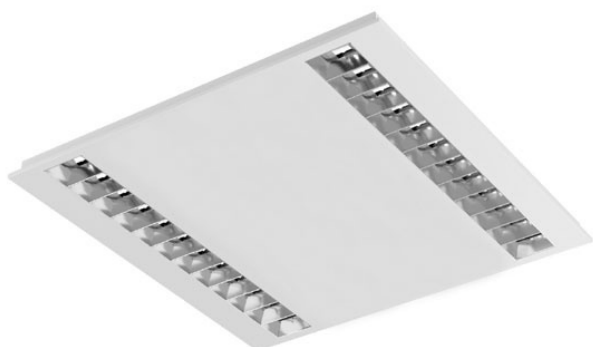


## AERRO VI LED - DUO LOUVER SQ

series: AERRO



**620 × 620 × 30.5 mm**

Recessed office LED luminaire

The construction of luminaire designed for compartment ceiling M600 and M625

Body of luminaire made of white powder coated steel sheet (RAL 9003)

L80/B20 > 60000h

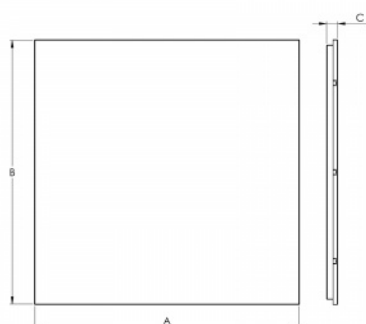
Diffuser made of polished MIRO louver

Diffusing systems meet the glare reducing level UGR < 19

Colour temperature 4000k, other temperatures on request

Luminaire equipped with electronic or dimmable electronic ballast

Usage: offices, schools, interior of buildings, commercial rooms, other interiors



### Product description

Product code  
**0-258104.020**

Optics  
**louver**

Dimension a  
**620 mm**

Dimension c  
**30.5 mm**

Total power consumption  
**48 W**

Color temperature  
**4000 K**

Mounting type  
**recessed,**

Weight  
**3.7 kg**

Driver  
**EVG**

Colour  
**white**

Dimension b  
**620 mm**

Type of light source  
**LED**

Luminous flux  
**5860 lm**

Color index (RA)  
**80**

Cover  
**IP 20**

### Photometry

AERRO VI LED - DUO LOUVER SQ - 620 x 620 x 30.5 mm

