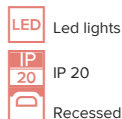
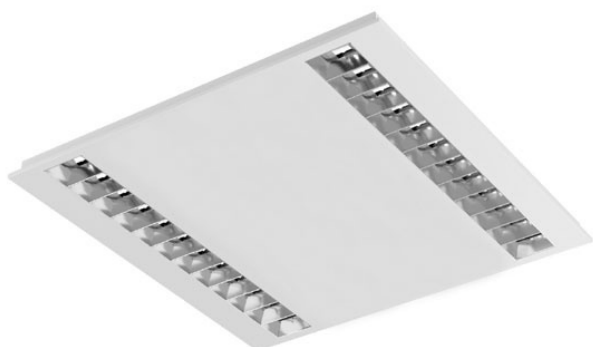


AERRO VI LED - DUO LOUVER SQ

series: AERRO



620 × 620 × 30.5 mm

Recessed office LED luminaire

The construction of luminaire designed for compartment ceiling M600 and M625

Body of luminaire made of white powder coated steel sheet (RAL 9003)

L80/B20 > 60000h

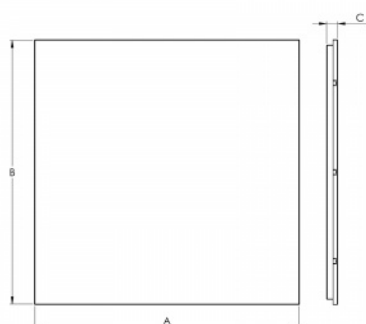
Diffuser made of polished MIRO louver

Diffusing systems meet the glare reducing level UGR < 19

Colour temperature 4000k, other temperatures on request

Luminaire equipped with electronic or dimmable electronic ballast

Usage: offices, schools, interior of buildings, commercial rooms, other interiors



Product description

Product code
0-258106.020

Optics
louver

Dimension a
620 mm

Dimension c
30.5 mm

Total power consumption
16 W

Color temperature
4000 K

Mounting type
recessed,

Weight
3.7 kg

Driver
EVG

Colour
white

Dimension b
620 mm

Type of light source
LED

Luminous flux
2300 lm

Color index (RA)
80

Cover
IP 20

Photometry

AERRO VI LED - DUO LOUVER SQ - 620 x 620 x 30.5 mm

