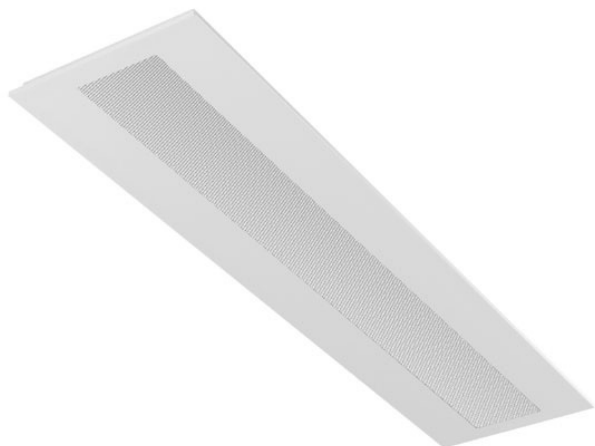


## AERRO VI LED - MONO LONG

series: AERRO



 Led lights

 IP 20

 Recessed

**1245 × 310 × 25 mm**

Recessed office LED luminaire

The construction of luminaire designed for compartment ceiling M600 and M625

Body of luminaire made of white powder coated steel sheet (RAL 9003)

L80/B20 > 60000h

Diffuser made of microprism PMMA

Diffusing systems meet the glare reducing level UGR < 19

Colour temperature 4000k, other temperatures on request

Luminaire equipped with electronic or dimmable electronic ballast

Usage: offices, schools, interior of buildings, commercial rooms, other interiors

### Product description

Product code

**0-258126.010**

Driver

**EVG**

Optics

**Microprismatic diffuser**

Colour

**white**

Dimension a

**1245 mm**

Dimension b

**310 mm**

Dimension c

**25 mm**

Type of light source

**LED**

Total power consumption

**16 W**

Luminous flux

**2300 lm**

Color temperature

**4000 K**

Color index (RA)

**80**

Mounting type

**recessed,**

Cover

**IP 20**

Weight

**4.5 kg**

### Photometry

AERRO VI LED - MONO LONG - 1245 x 310 x 25 mm

