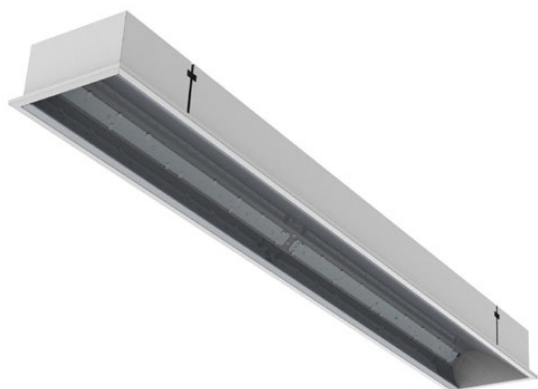


## ARRC LED ASYMMETRY

series: ARRC



**LED** Led lights

**IP 20** IP 20

**Recessed**

**1195 × 185 × 95 mm**

Recessed LED luminaire designed for indoor lighting

The construction of luminaire designed for mounting to compartment ceiling M600 and M625 or plasterboard

Body of luminaire made of white powder coated steel sheet (RAL 9003)

Diffuser made of satinic or microprismatic PMMA with high glare reduction level UGR<19

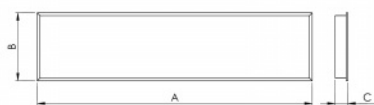
Asymmetrical lighting

Luminaire equipped with electronic or dimmable electronic ballast

Colour temperature 4000 K, other temperatures on request

Usage: offices, schools, interiors of buildings, commercial rooms, other interiors

Accessories to be ordered separately



### Product description

Product code  
**0-259009.000**

Driver  
**EVG**

Optics  
**asymmetrical Al reflector**

Colour  
**white**

Dimension a  
**1195 mm**

Dimension b  
**185 mm**

Dimension c  
**95 mm**

Ceiling recessed  
**1181x171**

Type of light source  
**LED**

Total power consumption  
**16 W**

Luminous flux  
**2220 lm**

Color temperature  
**4000 K**

Color index (RA)  
**80**

Mounting type  
**recessed,**

Cover  
**IP 20**

Weight  
**3.1 kg**

### Photometry

ARRC LED ASYMMETRY - 1195 x 185 x 95 mm

