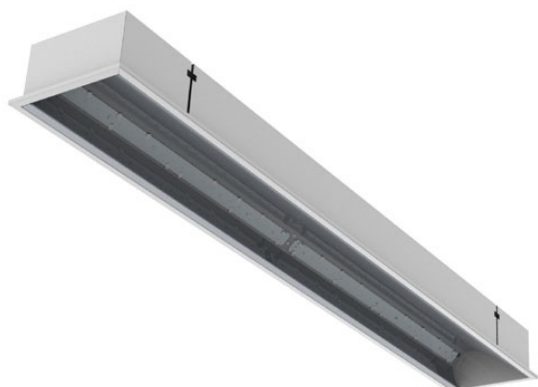


ARRC LED ASYMMETRY

series: ARRC



 Led lights

 IP 20

 Recessed

1245 × 185 × 95 mm

Recessed LED luminaire designed for indoor lighting

The construction of luminaire designed for mounting to compartment ceiling M600 and M625 or plasterboard

Body of luminaire made of white powder coated steel sheet (RAL 9003)

Diffuser made of satinic or microprismatic PMMA with high glare reduction level UGR<19

Asymmetrical lighting

Luminaire equipped with electronic or dimmable electronic ballast

Colour temperature 4000 K, other temperatures on request

Usage: offices, schools, interiors of buildings, commercial rooms, other interiors

Accessories to be ordered separately



Product description

Product code

0-259110.200

Driver

DALI / SwitchDim

Optics

asymmetrical Al reflector

Colour

white

Dimension a

1245 mm

Dimension b

185 mm

Dimension c

95 mm

Ceiling recessed

1231x171

Type of light source

LED

Total power consumption

41 W

Luminous flux

5120 lm

Color temperature

4000 K

Mounting type

recessed,

Note

holder for surface mounting

Cover

IP 20

Weight

3.4 kg

Photometry

ARRC LED ASYMMETRY - 1245 x 185 x 95 mm

