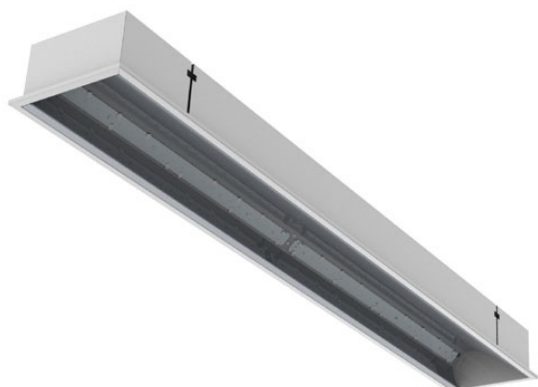


ARRC LED ASYMMETRY

series: ARRC



 Led lights

 IP 20

 Recessed

1545 × 185 × 95 mm

Recessed LED luminaire designed for indoor lighting

The construction of luminaire designed for mounting to compartment ceiling M600 and M625 or plasterboard

Body of luminaire made of white powder coated steel sheet (RAL 9003)

Diffuser made of satinic or microprismatic PMMA with high glare reduction level UGR<19

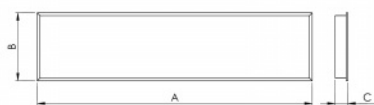
Asymmetrical lighting

Luminaire equipped with electronic or dimmable electronic ballast

Colour temperature 4000 K, other temperatures on request

Usage: offices, schools, interiors of buildings, commercial rooms, other interiors

Accessories to be ordered separately



Product description

Product code

0-259113.000

Driver

EVG

Optics

asymmetrical Al reflector

Colour

white

Dimension a

1545 mm

Dimension b

185 mm

Dimension c

95 mm

Ceiling recessed

1531x171

Type of light source

LED

Total power consumption

42 W

Luminous flux

5604 lm

Color temperature

4000 K

Color index (RA)

80

Mounting type

recessed,

Cover

IP 20

Weight

4.3 kg

Photometry

ARRC LED ASYMMETRY - 1545 x 185 x 95 mm

